



SafetyCam AI Edition

80% of car crashes are attributed to distracted driving. Take the next step to elevate your fleet's safety.



The **AI dashcam** offers fleets of all sizes a powerful device to enhance driver and fleet safety. Designed using first hand insights from fleet managers, it is equipped with multi-sensor HD cameras providing fleets with access to live and recorded video evidence of harsh driving incidents. Using artificial intelligence and computer vision, the dashcam detects distracted driving, driver drowsiness and unsafe driving behaviors, assisting drivers with real-time audio and visual alerts.

The **AI dashcam** grows with your fleet's needs and works seamlessly with Fleet Pins Fleet and Fleet Pins FleetMobile to provide an integrated solution that delivers real benefits that help reduce risk, coach drivers and improve safety.

Briostack enables users the ability to integrate Fleet Pins GPS devices within the application. This allows users to :

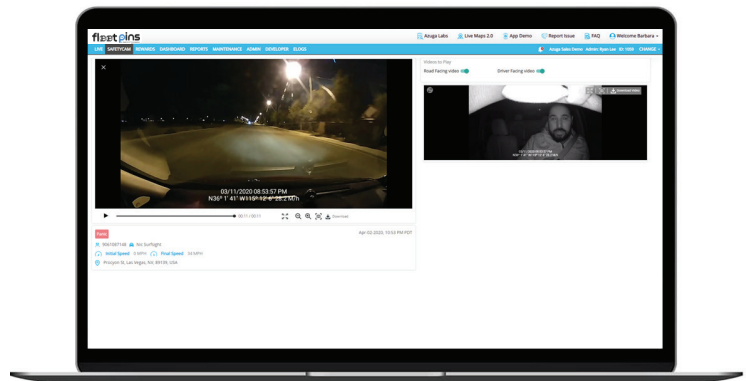
- Track vehicles in real-time on a map
- View vehicles position in relation to scheduled work on a map
- View vehicles locations in relation to an individual location on a map
- Produce reports of planned versus actual routing
- See breadcrumb paths on the reports for vehicles for each day
- Take advantage of the enhanced Fleet Pins features outside of Briostack

BENEFITS

- Reduce distracted driving, addressing one of the leading causes of preventable accidents
- Improve safety with real-time alerts from harsh driving incidents
- Get the whole picture with LIVE-VIDEO to your fleet vehicles, drivers, passengers & cargo
- Personalize training for high-risk drivers based on individual driving behavior data
- Reduce insurance claims & exonerate your drivers with video evidence stored in the cloud

Insert Benefits of AI based events such as:

- Cellphone use
- Smoking
- Food and drink
- Seat belt usage



<https://teensafe.com/100-distracted-driving-facts-statistics-for-2018/>



Fleet Pins
4320 E Presidio St STE 101, Mesa, AZ 85215
(520) 200-5445 | info@fleetpins.com
www.fleetpins.com

SafetyCam AI Edition

AI KEY FEATURES

- **LIVE view** streaming capabilities of the road and driver simultaneously
 - Up to ten minutes of streaming included
- **Distracted Driver Detection** with facial recognition technology that works during the day or night
- **AI Driver Assistance provides** real-time audio feedback and visual warnings for dangerous driving events
- Unlimited **on-demand video** retrieval from the Fleet Pins cloud
- **Parking Mode:** Built-in battery automatically turns camera on when sensing harsh movement, like vehicle break-ins
- **WiFi HotSpot** built-in to easily connect all your devices
- Ignition ON and Ignition OFF detection
- **Telematics features:** LIVE tracking, breadcrumb, breadcrumb replay, geofence and landmark functionality, posted speed*
- **Detailed reporting** available, such as breadcrumb, stops and alerts



SPECIFICATIONS



Road Camera: Full HD video, 1080p with 140° wide angle for detail and clarity



Driver Camera: 720p wide angle with infrared for improved night vision



Events detected: Hard braking, sudden acceleration, vibration, tampering, cornering and impacts



Camera auto-uploads footage 5 seconds before and after each harsh driving event



Unlimited on-demand video retrieval



Store up to 128 GB



Panic button for manual recording



Built-in speaker, microphone and visual display



WiFi Hotspot, LTE 3G/4G Support



Powered through 5V USB power connector with options to connect to 12v-24V through OBD2 or fuse connectors



Multiple Cameras: Connect up to 3 auxiliary cameras for side and rear views



Video assisted install in less than 10 mins



Over the Air (OTA) system & firmware updates



On-demand video retrieval from available footage*

